

Ty Uchaf, Tan Y Fron Road, Abergele, LL22 9AY

£550,000

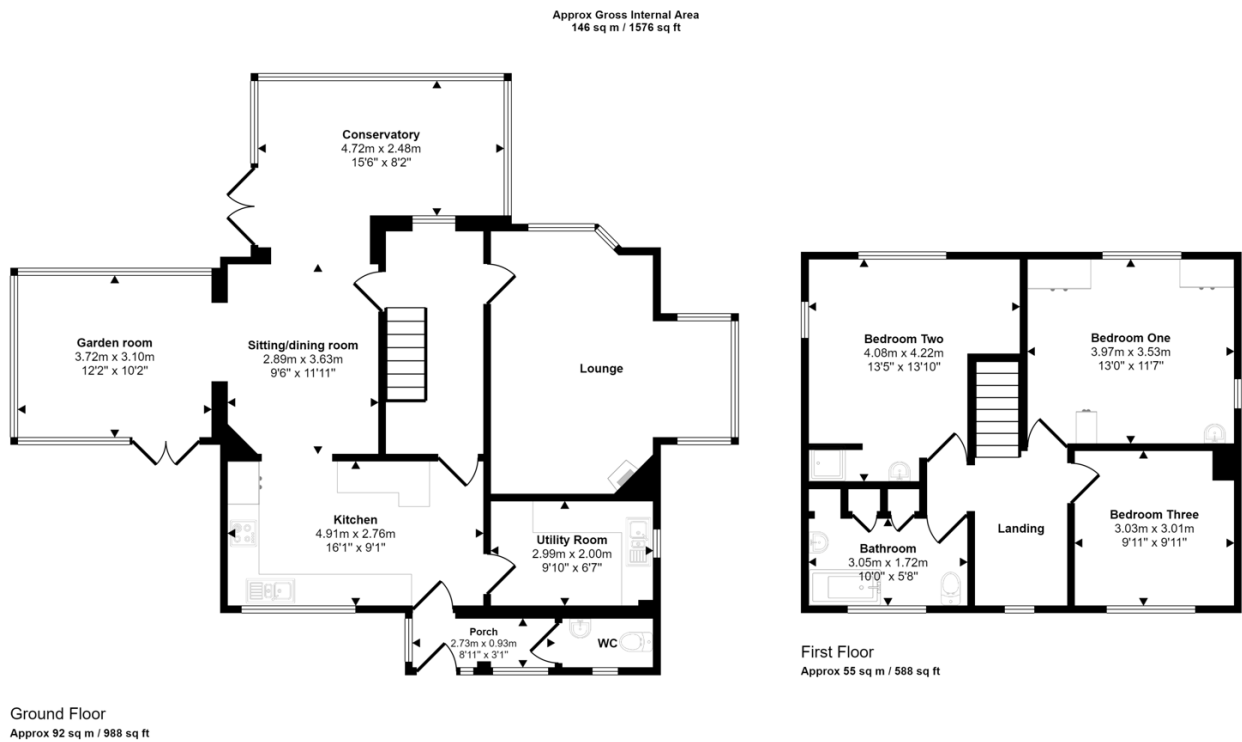
3 1 2



A most individual detached house, set in idyllic surroundings with spectacular panoramic views. This elevated 1930's property is approached via a gated private gravelled driveway and offers both seclusion and tranquillity. The impressive views, from every angle, stretch over open countryside and out to sea and the house is brimming with natural light, really taking advantage of the panorama. Having been meticulously maintained by the current owner, the accommodation is immaculate and includes a quaint lounge, fitted kitchen plus separate utility, sitting room/dining room, garden room and conservatory. The upstairs offers three double bedrooms, bathroom and office. The very large plot includes stunning gardens, a parcel of sheltered prime grassland and a variety of versatile outbuildings.

Key Features

- Detached 1930's house
- Well maintained
- Bright and airy accommodation
- Three bedrooms
- Large gardens and land
- Outbuildings with further scope
- Glorious views
- Council tax band - E
- EPC rating - F
- Freehold



This floorplan is only for illustrative purposes and is not to scale. Measurements of rooms, doors, windows, and any items are approximate and no responsibility is taken for any error, omission or mis-statement. Icons of items such as bathroom suites are representations only and may not look like the real items. Made with Made Snappy 360.